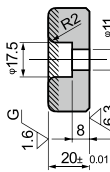
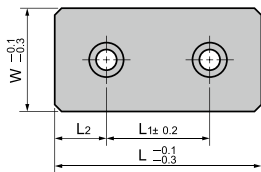
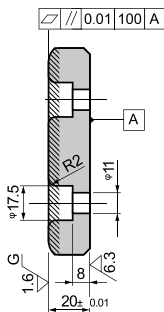
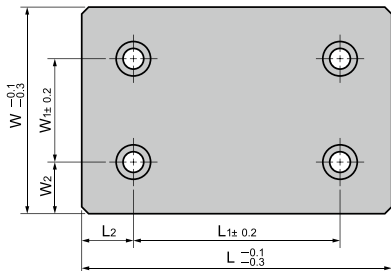




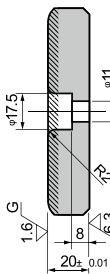
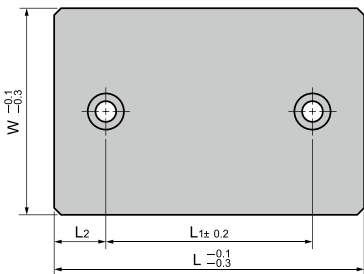
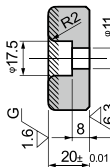
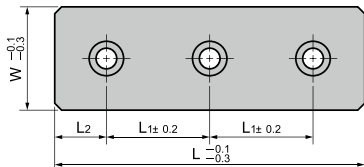
W = 28 to 75



W = 100 or more



W = 75, L = 250



Notes

材质 Material

烧结层 铁镍合金, 1.2mm以上  
Copper powder sintered  
(SO#220)

Hatched Area Sintered  
Thickness 1.2 mm or more  
SS400(base plate)

运动方向

Sliding Direction



订货  
Order



生产  
Produce



货运  
Transport

Order Code

DTOX.01/ DTOXT.01 - W - L

Order Code	W	L		W <sub>1</sub>	W <sub>2</sub>	L <sub>1</sub>	L <sub>2</sub>	
		DTOX.01	DTOXT.01					
DTOX.01	28	75				45	15	
		100				50	25	
		150				100		
	38	75				45	15	
		100				50		
		125				75	25	
	150	150				100		
		75				45	15	
		100				50		
	48	125				75	25	
		150				100	15	
		200				100	50	
		75				45	15	
	58	100				50	25	
		150				100	15	
		75				45	15	
	75	100				50	25	
		125				75	25	
		150				100	25	
		200				150	25	
		250				100	25	
		100				100	50	25
		125				125	75	25
	125	150				150	100	25
200		200	150	25				
250		250	200	50				
300		300	200	25				
300		-	200	50				
150	150	150	100	25				
	200	200	150	25				
	250	250	200	25				


**订货**  
 Order

**生产**  
 Produce

**货运**  
 Transport

**Order Code**

DTOX.01/ DTOXT.01 - W - L